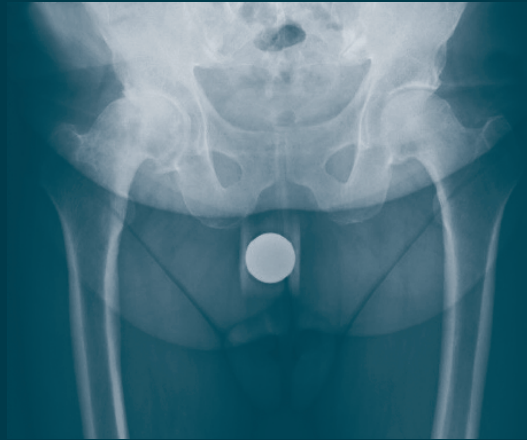




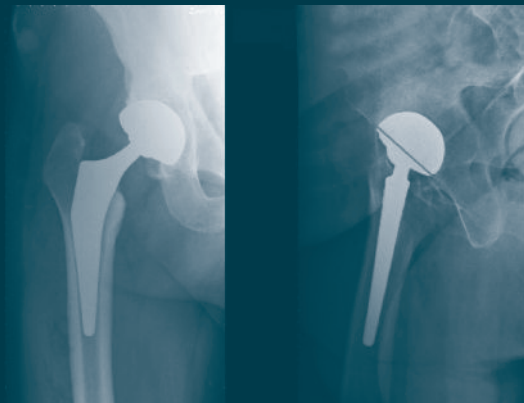
SYMBOL®

DEDIENNE SANTÉ

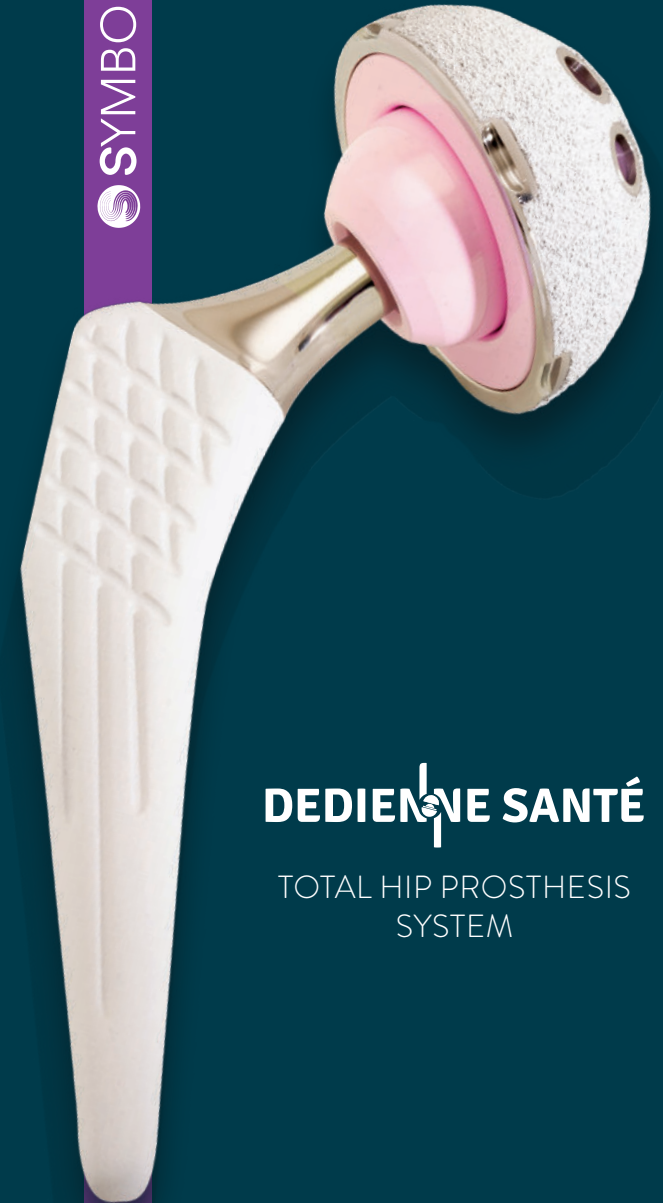
PREOPERATIVE X-RAY



POSTOPERATIVE X-RAY



SYMBOL®



DEDIENNE SANTÉ

TOTAL HIP PROSTHESIS
SYSTEM

TRIFOLD_SYMBOL_V1.1EN

 DEDIENNE SANTÉ

Le Mas des Cavaliers
217 rue Nungesser
34130 Mauguio - France

Customer Service : Tél. : +33 (0)4 66 28 06 85 • Fax : +33 (0)4 66 28 06 92

CE 0459

contact@dedienne-sante.com - www.dediennesante.com

 MADE IN MAUGUIO-FRANCE



SYMBOL® CUPS

- Hemispherical cups
- Centres of the components align
- Flattened polar ends (cementless cup)
- Range with common exterior design
- Ceramic head 36 from cup size 50
- Choice of intraoperative frictional torque
- Same-size implant, reamer/trial cup/metal-back
- No-touch technique with impaction tip
- Less-invasive reaming

DUAL MOBILITY CUPS

CEMENTLESS

Co-Cr, Press-fit, 1 flange and 2 pegs for revisions



DM
SIZES
44 to 68

DMR
SIZES
44 to 68



CEMENTED

Co-Cr



DM
SIZES
44 to 68

LINER FOR DM

PE LINER
SIZES
22.2 and 28*

* from cup size 46



CUPS WITH CERAMIC LINER

CEMENTLESS

TA6V, HAP - Holes for 6.5 screw - Polar hole for extraction



SIZES
44 to 64

LINER
SIZES
28, 32 and 36*
* from cup size 50



SYMBOL® STEMS

- Straight and shortened
- Metaphyso-diaphyseal blocking
- Refined distal end
- Progressive length collars
- Design from CT studies
- Management of sinking with trochanteric osteotomy
- 10 standard sizes and 10 vara sizes
- Standard CCD angle 130° and Vara CCD angle 120°
- Cone 12/14
- Round polished collar
- Impaction imprint

CEMENTLESS

TA6V, HAP, without support and with support adapted to each size and option



STANDARD
W/O COLLAR

SIZES 1 to 10



STANDARD
COLLARED

SIZES 1 to 10



VARA
W/O COLLAR

SIZES 1 to 10



VARA
COLLARED

SIZES 1 to 10

CEMENTED

Polished stainless steel M30



STANDARD

SIZES 1 to 10



VARA

SIZES 1 to 10

TÊTES

Short, medium and long neck



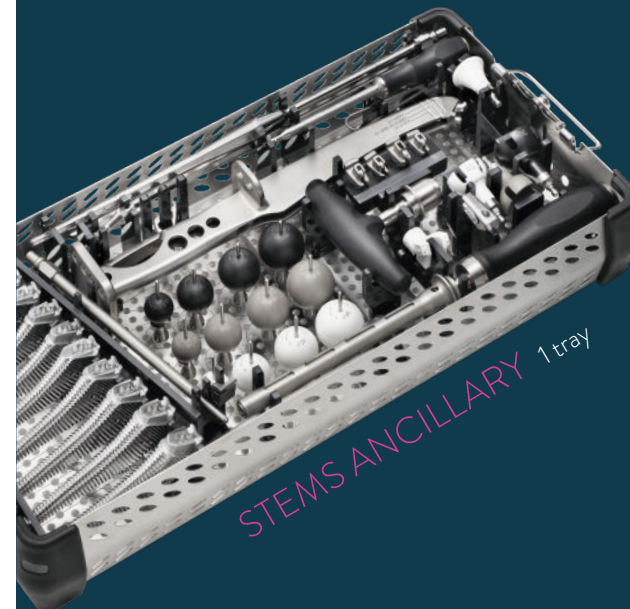
Co-Cr

SIZES
22.2 and 28



BIOLOX DELTA

SIZES
28 / 32 / 36*
* from cup size 50



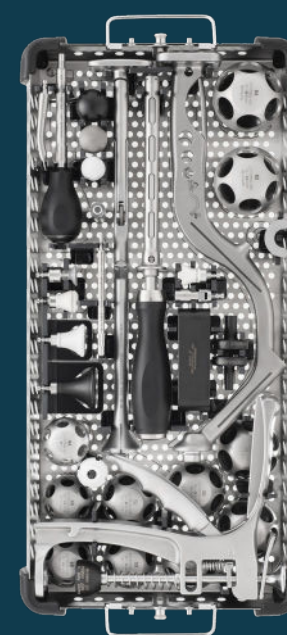
STEMS ANCILLARY 1 tray

SYMBOL® ANCILLARY

Conceived and designed by and for surgeons.

Instrumentation adapted to all types of approaches (anterior and posterior routes)

Ancillary equipment for any frictional torque



CUPS ANCILLARY 2 tray

