



# VIGI™ alarm system

VIGI™ alarm system assure the safety of the medical gas network from the source to the wall outlet.



### Performance and modularity

- Monitors up to 7 channels simultaneously
- Detailed display of pressures
- Compatible with logic or analog sensors
- Connection with relay boxes available
- Building Management System communication with the MODBUS link

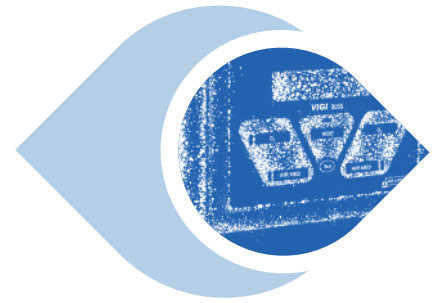
### Safety

- Signaling by LED and sound alarm
- Explicit message on the LCD screen
- Memorization of events in the event of a power failure

### Quick installation

- Usual pre-saved configurations for quick setup
- Parameter setting by wired keyboard or **VIGI Access software**

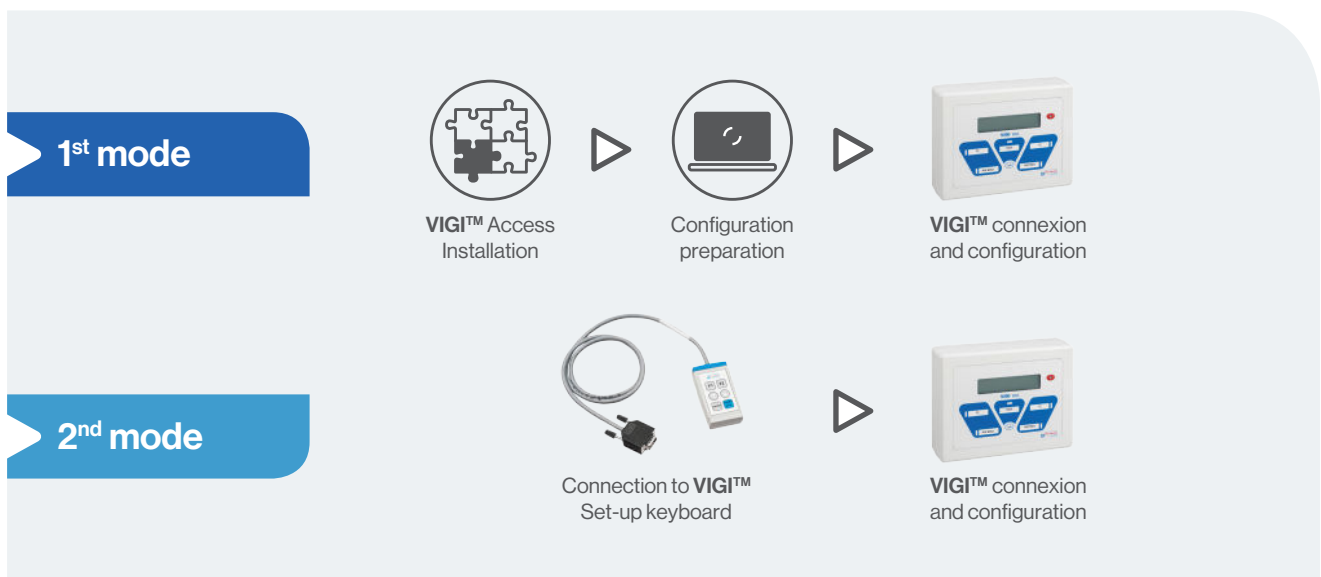
<b>Number of channels</b>	3, 5 or 7	<b>Power supply</b>	Mono 115 VAC/230 VAC (± 10%) Electrical class: class 1
<b>Type of inputs</b>	Analog (4-20 mA) or logic (dry contacts normally closed)	<b>Weight</b>	Main: 1.7 kg - Relay: 0.44 kg
<b>Dimensions main box</b>	Main box (wall mount only): 165 mm (H) x 210 mm (W) x 60 mm (D)	<b>Materials</b>	Treated anti-UV ABS plastic housing
<b>Relay box</b>	Flush (185 x 70 x 40 mm, Legrand ref. 080103)	<b>Weight of magnetic materials</b>	Main box: < 50 g Relay box: 145 g
	Surface-mounted (208 x 80 x 42 mm, Legrand ref. 080286)		
<b>Standards</b>	ISO 7396-1/ISO 60601-1/ISO 60601-1-2 standards. Class IIb medical device	<b>Lifetime</b>	10 years



## Installation

The **VIGI™** alarm ensures the safety of 3, 5 or 7 channels simultaneously. To optimize network security, the **VIGI™** alarm system must be configured depending on the monitored elements.

Air Liquide Medical Systems offers two configuration modes, via **VIGI™** Access software or via the **VIGI™** configuration keyboard.



## Analog pressure sensors

Logic or analog pressure sensors are the key elements of pressure monitoring. Placed throughout the network, from the high pressure station to the wall outlet, they are the source of information for **VIGI™**. The parameters of the analog sensors distributed by Air Liquide Medical Systems are programmed in **VIGI™**, it is however possible to connect it to other sensors by configuring them.

<b>Electrical connection</b>	Mini-DIN, Pin 3: + Power supply, Pin 1: Signal, red: + Power supply, Blue: Signal
<b>Standard</b>	ISO 60601-1-2 standard
<b>Lifetime</b>	10 years



### Analog pressure and vacuum sensors 4-20 mA





## ◆ References



**VIGI™**  
**3033 - 3-way**

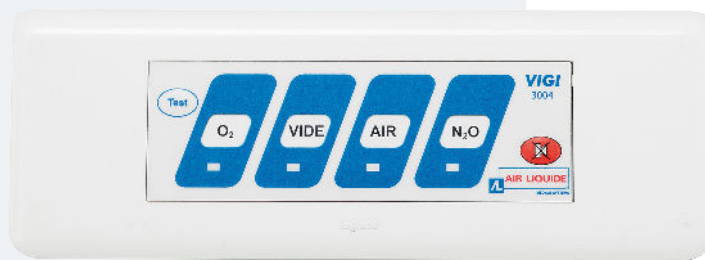


**VIGI™**  
**3055 - 5-way**



**VIGI™**  
**3077 - 7-way**

Description	Reference
VIGI™ 3033 - 3-way	AF071500
VIGI™ 3055 - 5-way	AF071600
VIGI™ 3077 - 7-way	AF071700
VIGI™ 3004 relay box	AF071400



**VIGI™  
3004 relay box**

## Accessories and spare parts

Description	Reference	Characteristics
Pressure sensor 4-20 mA - 0/16 bar	AF005000	Analog, 3 m cable, M10 x 100 connection
Pressure sensor 4-20 mA - 0/250 bar	AF005200	Analog, 1/4" gas connection
Vacuum sensor 4-20 mA - 0 / -900 mbar	AF005100	Analog, 3 m cable, M10 x 100 connection
Vacuum sensor 4-20 mA - 0 / -1000 mbar	AF005300	Analog, 1/4" gas connection
HP contact switch 2 wires 0/240 bar	AF070600	1/4" gas logic
1/4" male gas adapter - M10 x 100 female (x 5)	CX090500	-
1/4" female gas adapter - Ermeto	AF070700	-
14 x 16 mm T adapter with M10 x 100 connection for analog vacuum sensor	BB011100	-
Flat seal (x10) for 0/16 bar or vacuum sensor M10 x 100	BY008700	-
Copper seal 11 x 6 x 2 mm (x10) for 0/250 bar sensor	YJ101600	-

## Tools

Description	Reference
VIGI™ configuration keyboard	AF022500
USB/RS232 cable for PC/VIGI™ connection	YR191685
VIGI™ Access - Free software on demand	Consult us