

● BM terminal units

The **BM terminal units** designed according to the French standard (NF), allows quick connections to the medical fluids network. It is used to supply the medical gases essential for patient care. It is fitted with a valve/filter cartridge that can be easily replaced for maintenance.

Proven product

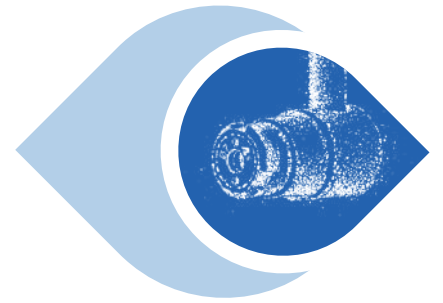
- Sold for more than 20 years
- More than 3 million connectors installed worldwide
- The most widely used NF wall outlet in France

The advantages of the one-piece

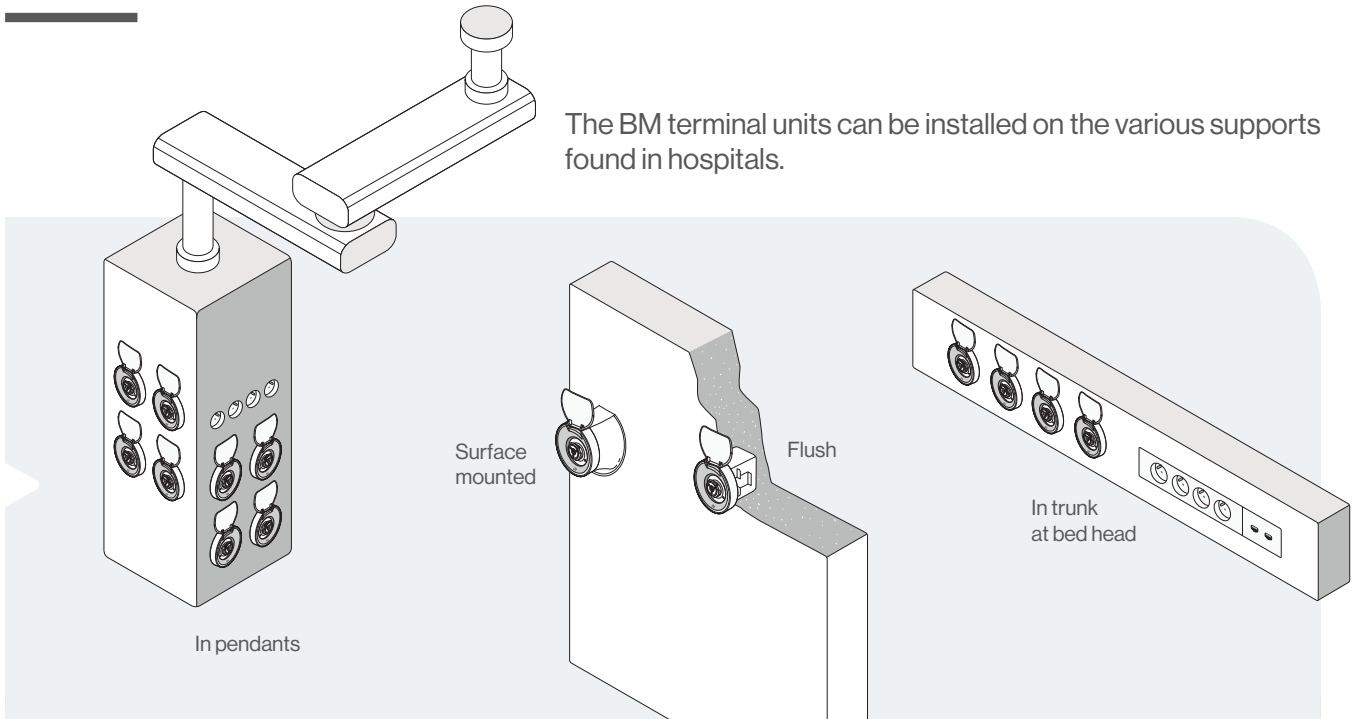
- Quick installation
- Reduced risk of leakage
- Single maintenance part only

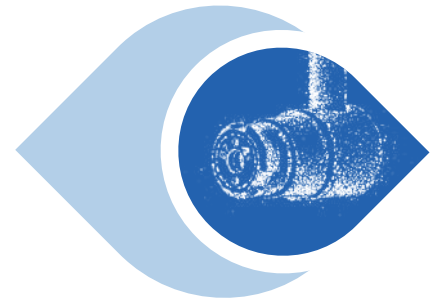


Gases available	O ₂ , Air, N ₂ O, CO ₂ , N ₂ , Air-800, Vacuum
3 types of mounting	In trunk, flush, surface
Nominal supply pressure	4 to 5 bar for gases, 8 to 10 bar for Air-800, - 0.6 bar for vacuum
Max pressure	10 bar for gases, 20 bar for Air-800
Max flow	150 L/min for all gases, 100 L/min for vacuum
Inlet	Nickel-plated brass spool piece ø 10 mm
Weight	Outlet body 290 g, ABS Housing
Weight of magnetic materials	26.1 g (MRI compatible)
Materials	Nickel-plated brass body, nickel-plated brass filter cartridge, Zamak hinge plate
Filter	60 µm for gases and 350 µm for vacuum
Standard	ISO 9170-1 standard. Medical device class IIa
Lifetime	10 years



Installation type

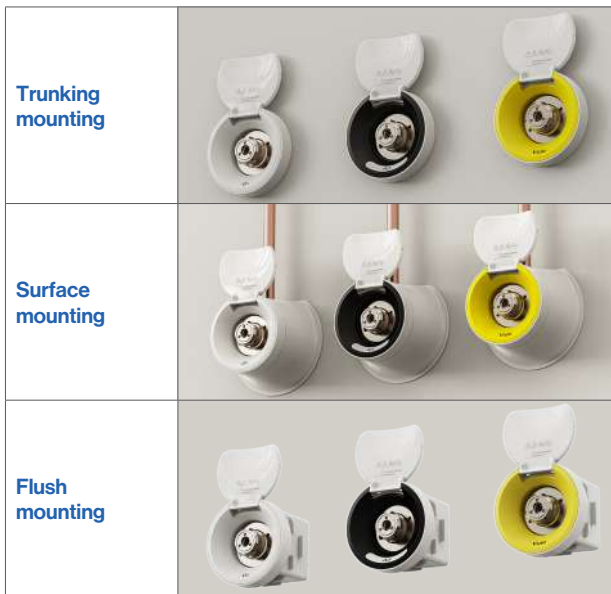




Outlet housing

The BM terminal units housing protect the outlet. There are three types of housing corresponding to the different types of installation.

Smile housing

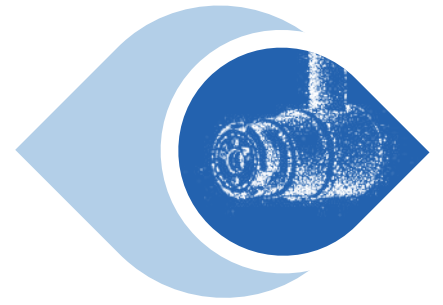


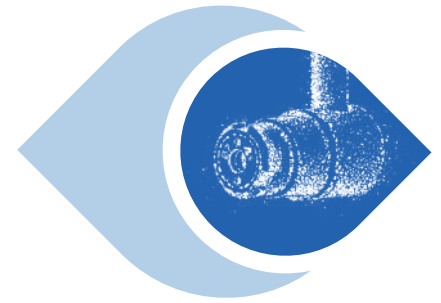
In wall housing dimensions	Ø 78 mm x 28 mm (D)
Surface housing dimensions	Ø 105 mm x 46 mm (D)
Drilling diameter	67 mm
Weight	Trunking = 46g Surface = 31g Flush = 40g
Material	ABS

Metal housing

Dimensions of the hinge plate	64 mm (L) x 64 mm (W)
Surface-mounted box dimensions	64 mm (L) x 64 mm (W) x 45 mm (D)
Weight	Box: in 140 g trunk, flush: 200 g, surface: 180 g
Materials	Surface-mounted and flush in plastic case bottom, painted Zamak hinge plate







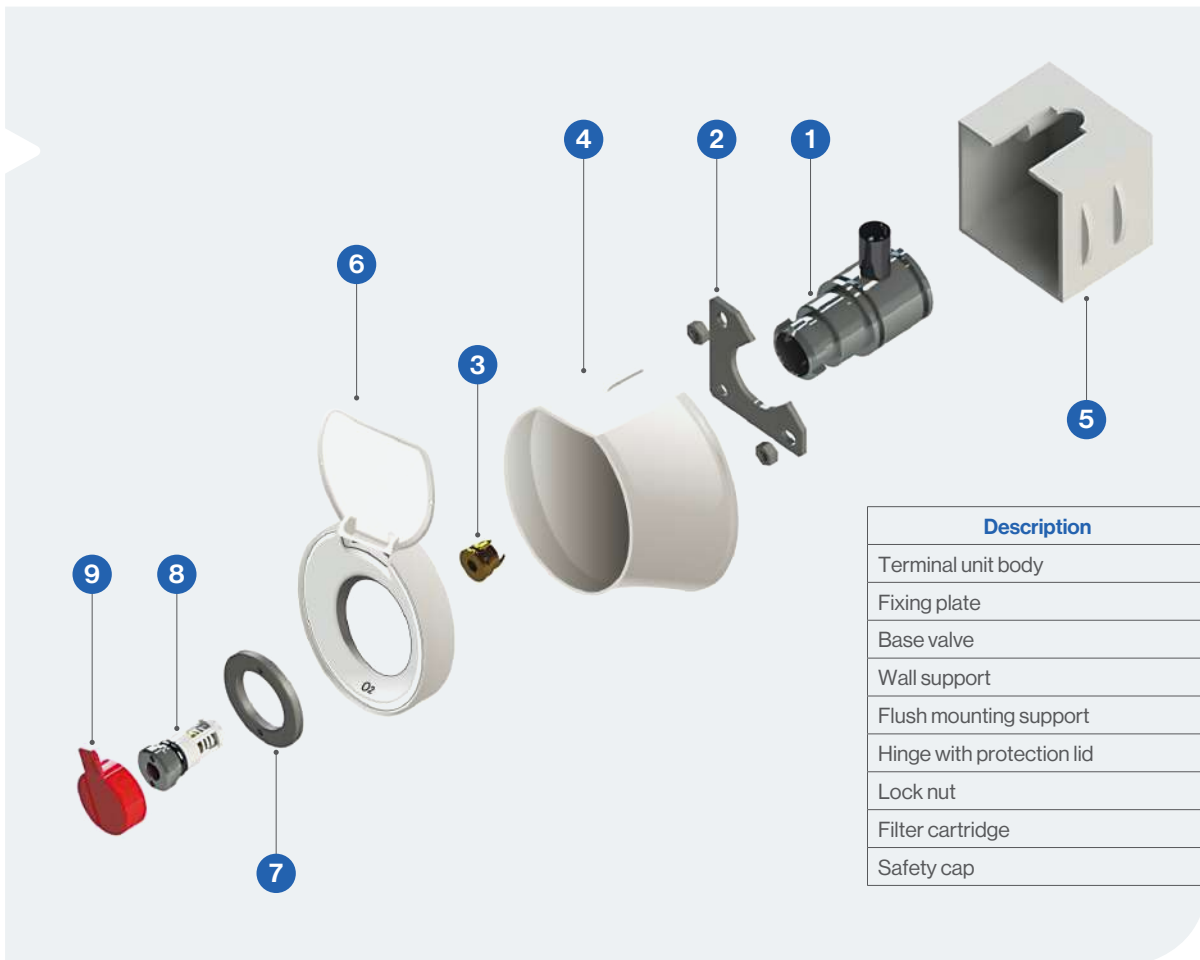
The heart of the NF gas outlet: the all-in-one filter cartridge

The **filter cartridge** is the sole maintenance part for the BM outlet. It contains a filter and a valve and can be replaced by simply screwing/unscrewing.

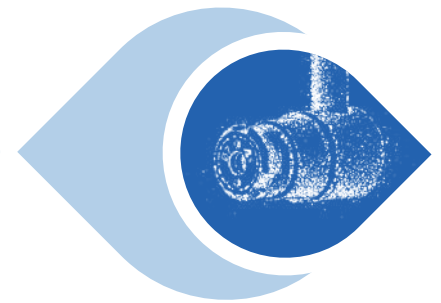
Identification of the filter cartridge	On each filter cartridge are: <ul style="list-style-type: none"> • The diameter allowing the gas to be identified instantly • The code (letter + number) guaranteeing visual traceability and thus the proper execution of maintenance
Maintenance	Replacement of the filter cartridge once a year for heavy services, every 2 years for other services



The BM terminal units composition



Description	Mark
Terminal unit body	1
Fixing plate	2
Base valve	3
Wall support	4
Flush mounting support	5
Hinge with protection lid	6
Lock nut	7
Filter cartridge	8
Safety cap	9



References

Terminal units (supplied with valve, safety cap and original filter cartridge)

Description	Reference
Terminal unit BM O ₂	BM000100
Terminal unit BM VAC	BM000200
Terminal unit BM Air	BM000300
Terminal unit BM N ₂ O	BM000400
Terminal unit BM N ₂ -800	BM000500
Terminal unit BM CO ₂	BM000800
Terminal unit BM Air-800	BM005000

Securing systems

Description	Reference
* BM terminal rnd housing "O ₂ " (6)	BM062602
* BM terminal rnd housing "air" (6)	BM062603
* BM terminal rnd housing "vide" (6)	BM062604
* BM terminal rnd housing "vac" (6)	BM062605
BM terminal rnd housing nude (6)	BM062606
Wall BM terminal rnd support	BM062607
Flush BM terminal rnd support	BM062624
Metal housing	BM001200
Metal housing + wall support	BM001100



Filter cartridge

Description	Reference
Filter cartridge ø 6 (x10) Air-800	BM051600
Filter cartridge ø 7 (x10) O ₂ , Air, N ₂ O, CO ₂	BM055200
Filter cartridge ø 8 (x10) N ₂	BM055300
Filter cartridge ø 8 (x10) Vacuum	BM055400

Smile housing labels

Description	Reference
Label BM outlet rnd "O ₂ "	YF254206
Label BM outlet rnd "air"	YF254207
Label BM outlet rnd "vide"	YF254208
Label BM outlet rnd "N ₂ O"	YF254209
Label BM outlet rnd "air 800"	YF254210
Label BM outlet rnd "CO ₂ "	YF254211
Label BM outlet rnd "N ₂ 800"	YF254212
Label BM outlet rnd "ar resp"	YF254213
Label BM outlet rnd "oxygeni"	YF254214
Label BM outlet rnd "vac"	YF254215

Metal housing labels

Label	Reference	Label	Reference
O ₂	YF254078	Air-800	YF254084
Vide	YF254082	Oxygenio (Portugal)	YF254087
Air	YF254079	Ar respiravel (Portugal)	YF254088
N ₂ O	YF254081	Vacuo (Portugal)	YF254089
N ₂	YF254083	Oxygen	YF254085
CO ₂	YF254080	Vacuum	YF254086

Spare parts

Description	Reference
Base valve (gas)	BM050800
Base valve (vacuum)	BM050900
Box alone for surface mounting	BM050200
Lock nut	BL050100

Tools

