

# BENOIT SYSTEMES



## LIGHT DRIVE 2.1

JULY 2023

[WWW.BENOITSYSTEMES.COM](http://WWW.BENOITSYSTEMES.COM)





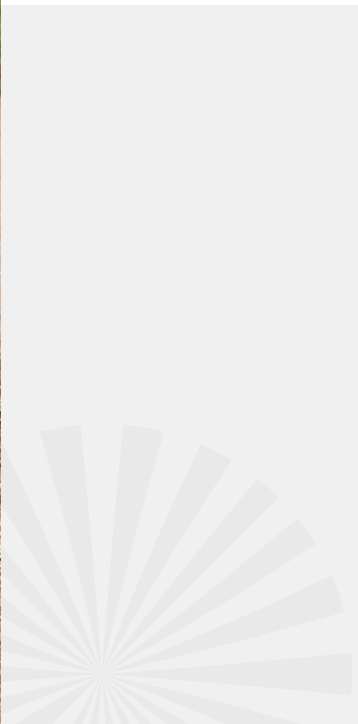
# LIGHT DRIVE 2.1

Designed for all manual wheelchair users, whether occasional, temporary or permanent, LIGHT DRIVE 2.1 turns manual wheelchair into ultralight and high performance powerchair in seconds.

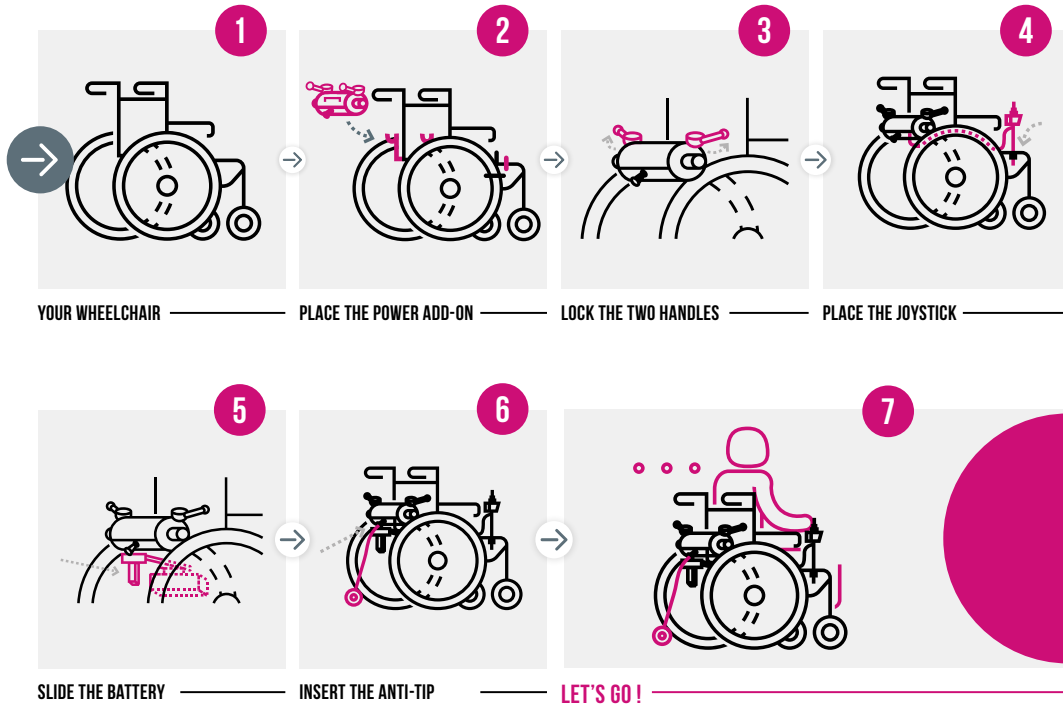
Benoit Systemes has been fitting power add-ons on manual wheelchairs in France since 1994. Light Drive 2.1 offers you the possibility to effortlessly add power to your manual wheelchair.

15'  
INSTANT  
INSTALLATION

DRIVE WITH  
A JOYSTICK



# HOW DOES IT WORK ?




Disengage the power add-on in one movement and feel free to self-propel.

*Jean-Claude*  
User since 2016 - diagnosed with multiple sclerosis in 2013.

“ My Light Drive helps me all year around to go shopping with my wife, to stroll through shopping centres and, on fine days, to wander around car boot sales and markets. Since I've had my Light Drive, I've become independent. I no longer need somebody with me all the time.





**LIGHT DRIVE 2.1**  
Ready for new  
adventures ?

# ADVANTAGES OF LIGHT DRIVE 2.1



LIGHTWEIGHT  
AND EASILY  
TRANSPORTABLE



ADAPTS TO ALL  
WHEELCHAIRS\*

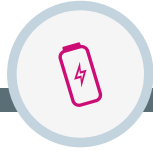
*\*see the compatibility guide*



INSTANT  
INSTALLATION



INDOORS/  
OUTDOORS



RANGE UP  
TO 20 KM



CAN BE  
TRANSPORTED  
BY PLANE\*

*Optional 11.4 Ah lithium-ion  
battery*



MADE  
IN FRANCE



REMOVABLE



COLOUR OF  
YOUR CHOICE

*\*Optional 11.4 Ah battery complies with IATA regulation.*

## Light Drive 2.1

is lightweight, removable and  
easily transportable.



## KEY FEATURES



Ergonomic  
clutch system



Retractable  
joystick



Anti-tip  
for safety



Extended colour  
range



Battery with  
charge indicator

## WIDE RANGE OF COLOUR



### CLASSICS

- BLACK
- WHITE
- BLUE
- RED
- KHAKI

### METALLICS

- MIDNIGHT BLUE
- GREY
- SILVER
- COPPER
- CHAMPAGNE GOLD

### TRENDY

- SKY BLUE
- PINK
- GREEN
- YELLOW
- ORANGE
- BLACKCURRANT OF BURGUNDY

# LIGHT DRIVE MINI 2.1



## A smaller version for children

Light Drive Mini 2.1 can be refitted as the child grows allowing to change wheelchair without changing the power add-on.

Wheelchair equipped with a Light Drive maintains its original manoeuvrability and foldability, it is also easy to transport in any vehicle.

Thanks to Light Drive Mini 2.1, your child will be able to ride easily on all kinds of terrain (steep slopes, grass, gravel).

Reverse gear makes the pedestrian pavement and small step more accessible.



# TECHNICAL DETAILS

Our power add-ons can be fitted on most of wheelchairs starting from **32cm seat width and 40 cm between the wheels**.

	Maximum user weight	Power add-on weight
Light Drive 2.1	120 kg	8,8 kg
Light Drive Mini 2.1	120 kg	8,8 kg
Light Drive Plus 2.1	240 kg	16 kg

Max speed	10 km/h programmable
Motor	2 x 130W motors with brakes
Motor Light Drive Plus 2.1	4 x 130W motors with brakes
Climbing ability	6° (11%)
Manufacturer's warranty	24 months for the power add-on and the battery

# LIGHT DRIVE PLUS 2.1



Light Drive Plus 2.1 has been designed for users of wheelchairs with a weight above 120 kg.

Equipped with four 130 W motors, it will allow you to enjoy the advantages of lightweight power add-ons.

Light Drive 2.1 Plus can be fitted on all foldable wheelchairs. It is provided with a battery of 18Ah and offers a range up to 20 km.



**Compatible wheelchairs:** a compatibility guide is available to know the models of wheelchairs on which Light Drive 2.1 can be installed, in compliance with general requirement for safety and performance stated in the European Regulation related to medical devices. [Find out more](#)

## 19AH LITHIUM-ION BATTERY

Weight	Range
- 3,62 kg (7.98 lbs)	- up to 20 km (up to 12.8 mi)



**OPTIONAL 11.4 AH LITHIUM-ION BATTERY COMPLIES WITH APPLICABLE IATA REGULATIONS FOR AIR TRAVEL.**





**YOUR LOCAL DEALER**

REQUEST YOUR **FREE TRIAL !**

📍 7 Rue du Pont,  
21450 Billy-Lès-Chanceaux, FRANCE  
☎️ (+33) 3 80 96 54 65  
@ [export@benoitssystemes.com](mailto:export@benoitssystemes.com)

CE Light Drive 2.1 complies with the European Regulation 2017/745 on Medical Devices (Class I).