

**BENOIT SYSTEMES**

*Kitcool 2.0*  
←

*Acti tab*  
↙

**WELL-BEING  
ACCESSORIES**



*Follow us!* ↘

[WWW.BENOITSYSTEMES.COM](http://WWW.BENOITSYSTEMES.COM)



NEW IN JUNE 2022

## KITCOOL 2.0

**Kitcool 2.0** is a detachable and ergonomic accessory for manual wheelchairs that enables the user to adopt the perfect resting position whenever they choose, by simply tilting backwards without having to transfer into a different seat.

Foldable, lightweight and compact, you can take it everywhere and store it easily.



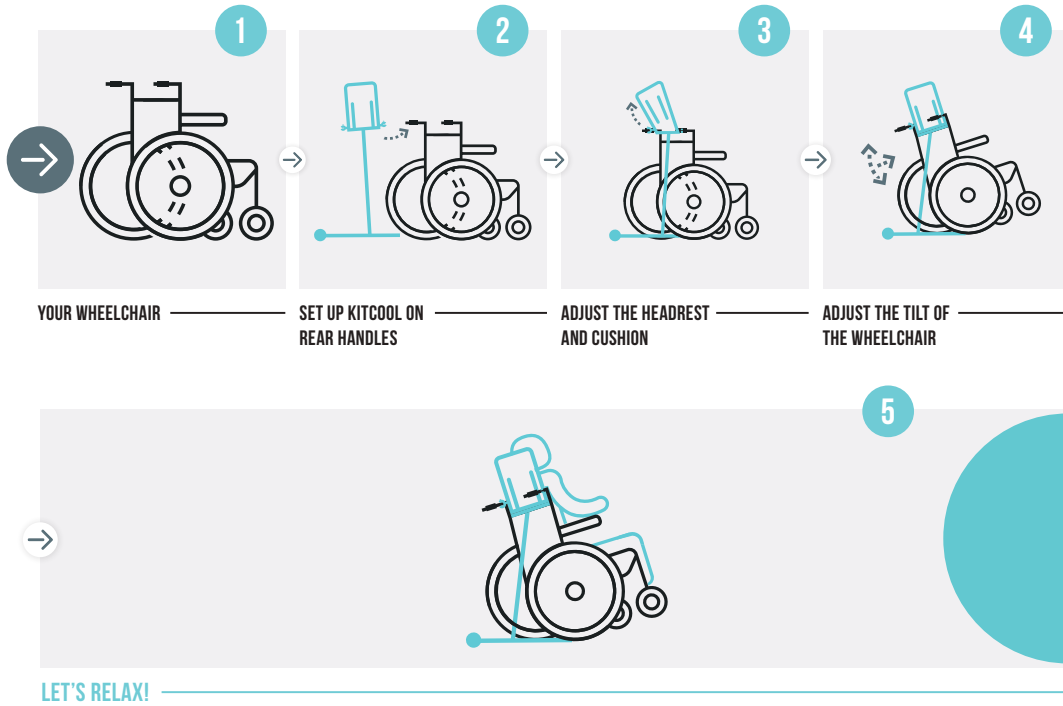
INSTANT  
INSTALLATION



EASY  
RELAXED  
POSITION



# HOW DO YOU SET IT UP ?



# ADVANTAGES OF KITCOOL 2.0



**HEALTH**  
Prevents and helps heal pressure sores, improve circulation, can alleviate postural fatigue, eases breathing and swallowing.



**WELL-BEING**  
Helps the user rest and relax as they can change position as easily as an able-bodied person changes chair.



**INSTANT INSTALLATION WITHOUT TOOLS**



**SECURITY**  
Extremely stable, reliable and robust.



**EASY SET UP**  
of the tilt and the headrest.



**FOLDING, LIGHTWEIGHT AND SLIM LINED**  
It travels smoothly by car and plane, and can be stored easily.



**TRAINING AID**  
Use it to learn to do 'wheelies' with no risk of falling backwards.

## THE BENEFITS

Find a relaxing position by yourself or let yourself be helped.

Provides mutual comfort for the carer and the user.

Safe assistance to perform a wheelstand.



No tools required



# TECHNICAL DETAILS

Size of folded Kitcool 2.0	L600mm x W460cm x H100mm
Cushion	Veltosuede - 100% polyester
Tilt angle	from 25° to 60°
Weight	3.7 kg
Warranty	2 years

## IS IT COMPATIBLE WITH MY WHEELCHAIR?

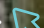
Kitcool 2.0 can fit on all manual wheelchairs with rear handles.

Contact us!

## 2 MODELS OF KITCOOL 2.0

- For seat width **from 26 cm to 35 cm**
- For seat width **from 36 cm to 52 cm**

Required handles length	min 9 cm
Required handles diameter	from 20 to 35 mm
Push handles position	above the backrest
Seat width	from 26 cm to 52 cm

More information is  
available on our website. 



NEW IN JUNE 2022



No tools required  
for installation



Simple adjustment of  
the headrest cushion



Simplified mounting  
system



Stored headrest  
adjustment

**KITCOOL**  
The ideal  
relaxing position  
that everybody  
needs



Increase your  
autonomy and  
independence in  
your daily life with  
**ACTI'TAB**





# ACTI'TAB

**Acti'tab** provides a convenient and extra comfort solution to increase your autonomy and independence in your daily life.

This removable tray is placed directly above your lap to leave your hands free and help you to carry things in your daily activities.

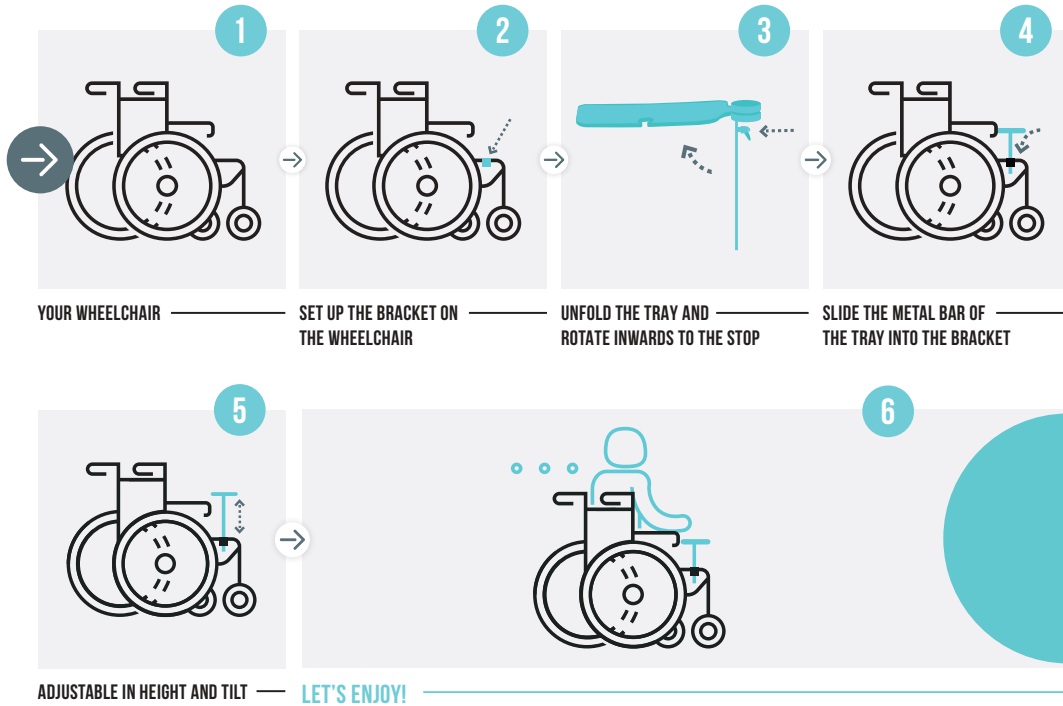


LEAVE YOUR  
HANDS FREE

MANY  
ACCESSORIES  
PROVIDED



# HOW DO YOU SET IT UP?



# ADVANTAGES OF ACTI'TAB



REMOVABLE AND EASILY TRANSPORTABLE



ADAPTS TO ALL MANUAL AND POWER WHEELCHAIRS (contact us)



EASY INSTALLATION, NO TOOLS REQUIRED



FULLY ADJUSTABLE (HEIGHT AND TILT)



FLIP DOWN POSITION AND ALWAYS AVAILABLE



DISCREET AND SIMPLE

## THE BENEFITS

Compatible with Light Drive 2.1  
You can still sit at the table, even if Acti'tab is mounted to your wheelchair.

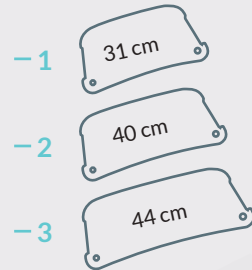


Available for left and right-handed



# TECHNICAL DETAILS

## 3 MODELS OF ACTI'TAB



Tray width	18 cm
Tray material	Plexiglas
Warranty	2 years



## SEVERAL POSITIONS

### AVAILABLE



**Flat position**  
for carrying your goods



**Tilted position**  
for easy reading



**Flip down position**  
for easy transfers



## ACCESSORIES

Many accessories are provided including:

- a **removable tray** with a multi-edge face / a single edge face
- a **cup holder**
- a non-slip **silicone mat**...

More information is available on our website. [👉](#)





YOUR DEALER

📍 7 Rue du Pont,  
21450 Billy-Lès-Chanceaux FRANCE  
☎️ (+33) 3 80 96 54 65  
@ [export@benoitsystemes.com](mailto:export@benoitsystemes.com)



Kitcool 2.0 and Acti'tab comply with the European Regulation 2017/745 on Medical Devices (Class I).